

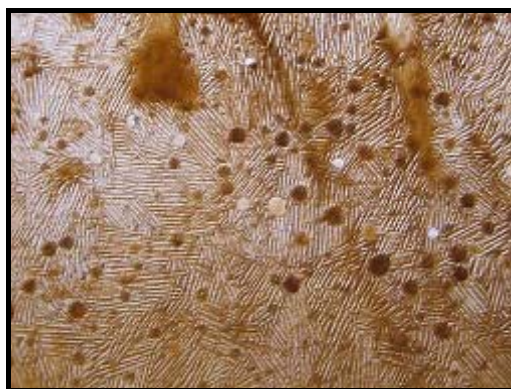
WHAT ARE WE DOING IN THE LOW-TEMPERATURE LABORATORY?

At present we are running a project funded by THE LEVERHULME TRUST.



Dr. Debbie Knight

Dr Debbie Knight is conducting experiments on how turbulent supercooling affects frazil ice formation.



Debris-rich ice created from supercooled water in the laboratory

Identifying the controls on formation of basal ice from supercooled subglacial water beneath temperate glaciers, these experiments complement fieldwork carried out at glaciers draining the Vatnajökull ice cap in Iceland.